



Introduction to the National Enhanced CLAS Standards: Understanding Disparities and Building Health Equity (Culturally and Linguistically Appropriate Services)

Session 4

August 27th, 2024

Presenter:

Haner Hernández PhD, CPS, CADCI, LADCI

In collaboration with The Central East Addiction Technology Transfer Center (ATTC)



CLAS Matters! Helping People
Achieve Their Full Health Potential





HISPANIC/LATINO
BEHAVIORAL HEALTH
CENTER OF EXCELLENCE

Module 4: Action Plan and Resources

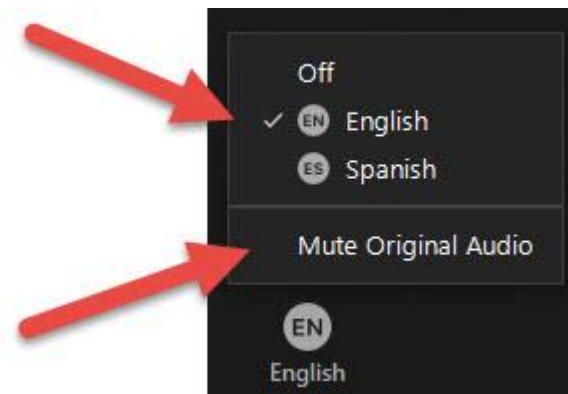
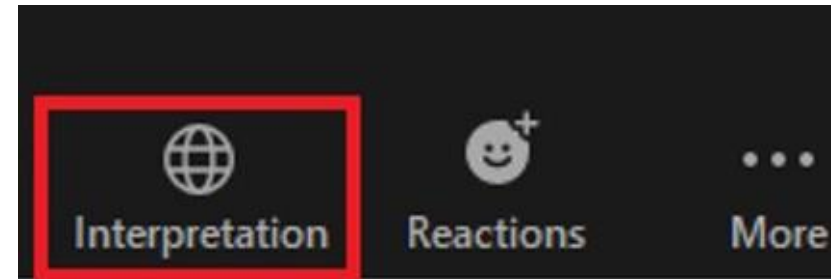


For simultaneous translation to Spanish

Para traducción simultánea a Español

Click the
interpretation tab
and then click
Spanish

Presionar la pestaña
de interpretación y
luego
presionar Español



Culturally and Linguistically Appropriate Services (CLAS) in Health and Health Care

“The CLAS Standards are intended to advance health equity, improve quality of care and help eliminate health care disparities by providing a blueprint for *individuals* and health and health care *organizations* to implement culturally and linguistically appropriate services.”

Review of previous sessions

Define

Define disparities, health equity, and inclusion and its correlation to your work.

Identify

Identify how cultural, behavioral, and health system factors converge and contribute to unequal access and differential care.

Describe

Describe benefits of implementing CLAS Standards across behavioral health settings with growing minoritized populations.

Review of previous sessions



Identify business strategies to build organizational capacity to deliver culturally responsive services to diverse communities.

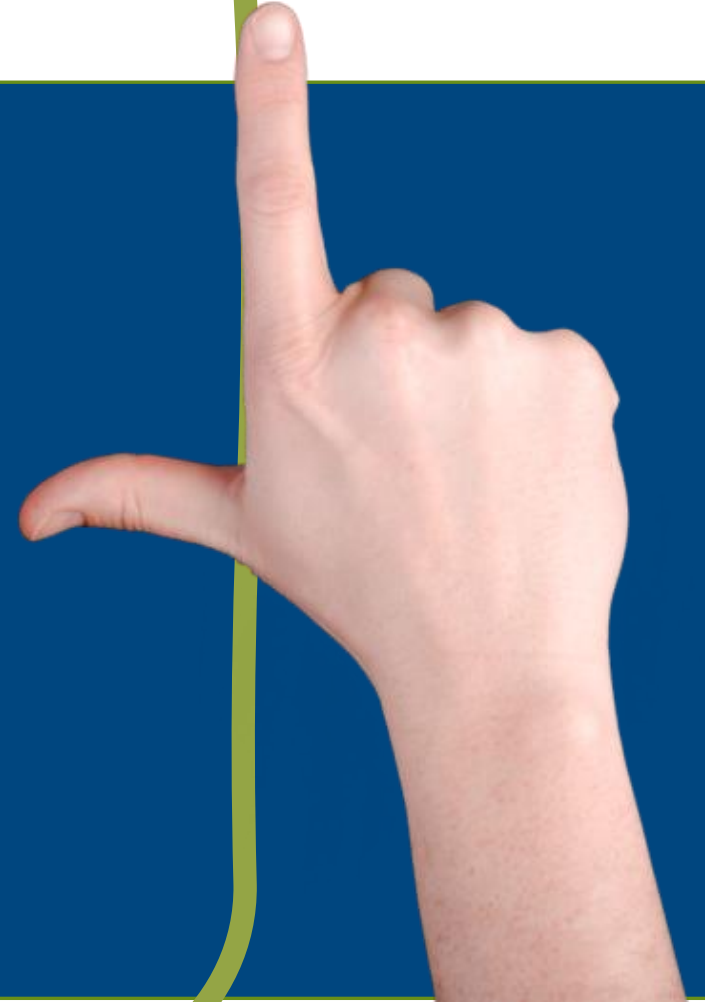
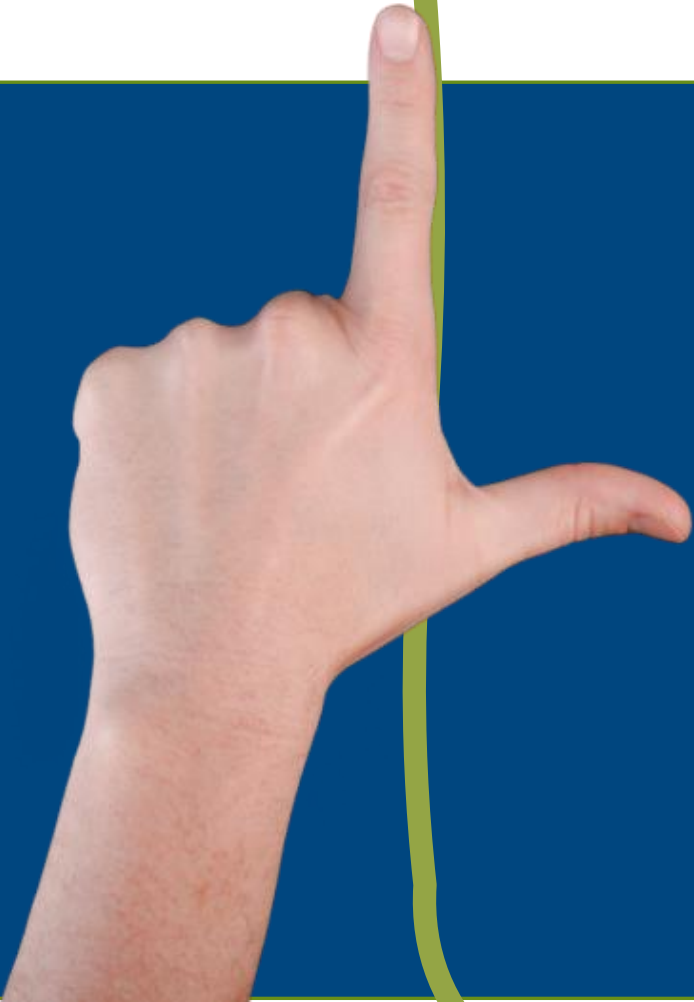


Identify opportunities for CLAS Standards integration in your role.



List technical assistance opportunities to support organizational implementation of CLAS Standards.

Action Plan



Working Towards Effective Implementation of the CLAS Standards

Convene a Working Group to Include Representation from:

- Member(s) of your Board of Director
- Senior/Executive, Supervisory, and Frontline Staff
- Representation of People receiving services
- Community-level representation of the populations your organizations works with

NOTE: Think about the diversity of the Working Group as it relates to Race, Ethnicity, Gender Identity, Sexual Orientation, Age, Ability, etc.

Conduct an Organizational Assessment

- Conduct an initial Organizational Assessment (interview key stakeholders) to determine stage of readiness to implement the CLAS Standards.
- Use the Implementation Check List to help guide the process
- Take the required steps to move to readiness for actions
- Select Appropriate Assessment Tools (Individual and Organizational)
- Questions: What resources (human, time, and monetary) will you need to be successful
- Develop a Work-plan and timeline, delineate responsibilities

Consider Culturally Responsive Treatment Environment

Checklist:

- Organizational values
- Governance
- Planning
- Evaluation Monitoring
- Language services
- Workforce and staff development
- Organizational Infrastructure





NEWSLETTER SIGNUP

REQUEST TA

English



HISPANIC/LATINO
BEHAVIORAL HEALTH
CENTER OF EXCELLENCE

About ▾

Focus Areas ▾

Events

Products ▾

Resources

Language Access

Resources

Checklist for Implementation

[An Implementation Checklist for the National CLAS Standards \(hhs.gov\)](https://www.hhs.gov)

**An Implementation Checklist for
the National CLAS Standards**

with a CLAS Action Worksheet and CLAS Testimonials

Resources

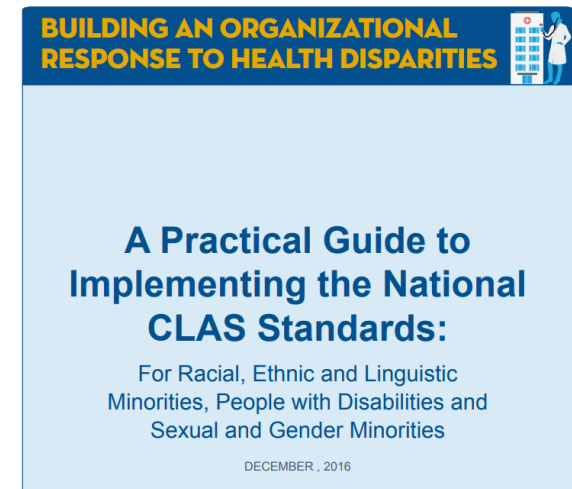


[ATTCnetwork, Building Health Equity and Inclusion, Free Resources](#)

[Roadmap for Technical Assistance Efforts in Substance Use Services Administration](#)



www.thinkculturalhealth.hhs.gov



[A Practical Guide to Implementing the National CLAS Standards](#)

Health equity is achieved when every person has the opportunity to attain his or her full health potential and no one is *"disadvantaged from achieving this potential because of social position or other socially determined circumstances."*

CLAS Matters!



Questions?

Digital Presence

Search for us as: @hlbhcoe

Facebook 



Instagram 



LinkedIn 



¡Gracias! Thank You!

Your opinion is important to us!
Fill out your evaluation form.
Just scan this code with your smartphone.

If you cannot complete the evaluation with the QR code, an email with the link will be sent to you after the webinar.

CONTACT US

Website: www.hispaniclatinobehavioralhealth.org

Email: info@hispaniclatinobehavioralhealth.org

Evaluation

<https://lanitek.com/P?s=600972>

Evaluación:

<https://lanitek.com/P?s=600972&lng=Spanish>



HISPANIC/LATINO
BEHAVIORAL HEALTH
CENTER OF EXCELLENCE



@hlbhcoe

