

# The Impact of COVID-19 on Ohio's Hispanic and Latinx Communities, Part 2

**Marilyn L. Sampilo, PhD, MPH**

**September 29, 2021**



# Co-Sponsor Slide

**Ohio** | Latino Affairs  
Commission

The MHTTC Network uses affirming, respectful and recovery-oriented language in all activities. That language is:

STRENGTHS-BASED  
AND HOPEFUL

INCLUSIVE AND  
ACCEPTING OF  
DIVERSE CULTURES,  
GENDERS,  
PERSPECTIVES,  
AND EXPERIENCES

HEALING-CENTERED AND  
TRAUMA-RESPONSIVE

INVITING TO INDIVIDUALS  
PARTICIPATING IN THEIR  
OWN JOURNEYS

PERSON-FIRST AND  
FREE OF LABELS

NON-JUDGMENTAL AND  
AVOIDING ASSUMPTIONS

RESPECTFUL, CLEAR  
AND UNDERSTANDABLE

CONSISTENT WITH  
OUR ACTIONS,  
POLICIES, AND PRODUCTS

Adapted from: [https://mhcc.org.au/wp-content/uploads/2019/08/Recovery-Oriented-Language-Guide\\_2019ed\\_v1\\_20190809-Web.pdf](https://mhcc.org.au/wp-content/uploads/2019/08/Recovery-Oriented-Language-Guide_2019ed_v1_20190809-Web.pdf)



National Hispanic and Latino

MHTTC

Mental Health Technology Transfer Center Network  
Funded by Substance Abuse and Mental Health Services Administration

# Disclaimer

This presentation was prepared for The National Hispanic and Latino MHTTC under a cooperative agreement from the Substance Abuse and Mental Health Services Administration (SAMHSA). All material appearing in this presentation, except that taken directly from copyrighted sources, is in the public domain and may be reproduced or copied without permission from SAMHSA or the authors. Citation of the source is appreciated. Do not reproduce or distribute this presentation for a fee without specific, written authorization from The National Hispanic and Latino MHTTC. This presentation will be recorded and posted on our website.

At the time of this presentation, Miriam Delphin-Rittmon served as Assistant Secretary for Mental Health and Substance Use and Administrator of SAMHSA. The opinions expressed herein are the views of the speakers, and do not reflect the official position of the Department of Health and Human Services (DHHS), or SAMHSA. No official support or endorsement of DHHS, SAMHSA, for the opinions described in this presentation is intended or should be inferred.

This work is supported by grant No. 6H79SM081788 from the DHHS, SAMHSA.

# Authors' Disclosure

- This project was made possible by a Eugene Washington COVID-19 Enhancement Award from the Patient-Centered Outcomes Research Institute to The Ohio State University (contract number: EA-8488-TOSU).
- The content is solely the responsibility of the authors and does not necessarily represent the official views of the Patient Centered Outcomes Research Institute.

# Authors' Disclosure

- No conflicts to disclose

# Acknowledgements

## PCORI Engagement Team Members

### University of Cincinnati

Christine O'Dea, MD, MPH  
Ligia Gomez, MA

### Cleveland Clinic

Marilyn Sampilo, PhD, MPH  
Paolo Raska, PhD

### MARTTI

Tatiana Cestari, PhD  
Sarah Stockler-Rex, BA

### University of Toledo

Louis Guardiola, MSW  
Arturo Ordóñez Vasquez, MSW

### The Ohio State University

Glenn Martinez, PhD, MPH  
Jessica Zimmer, BA, BS  
Sandra Martinez, MSW, LSW  
Milly Valverde, MA  
Rachel Brogee, BA

### Former Project Coordinators

Tatiana Friedman, BA, MA, MEd  
Camila Gandelman, BA



Latino Affairs  
Commission

The Ohio Commission for Hispanic and Latino Affairs (OCHLA) participated in the conceptualization and implementation of the survey in collaboration with the

above partners. The initial findings were reported during OCHLA's 2020 Latino Affairs Summit and we will continue to partner with them on the dissemination of this report.

---

We would also like to acknowledge our network of patient stakeholders without whom this project would not have been possible.

# Objectives

## Part 1

- Discuss physical and social effects of the COVID-19 pandemic on the Hispanic and Latinx community
- Discuss the impact of the COVID-19 pandemic on Hispanic and Latinx mental and behavioral health

## Part 2

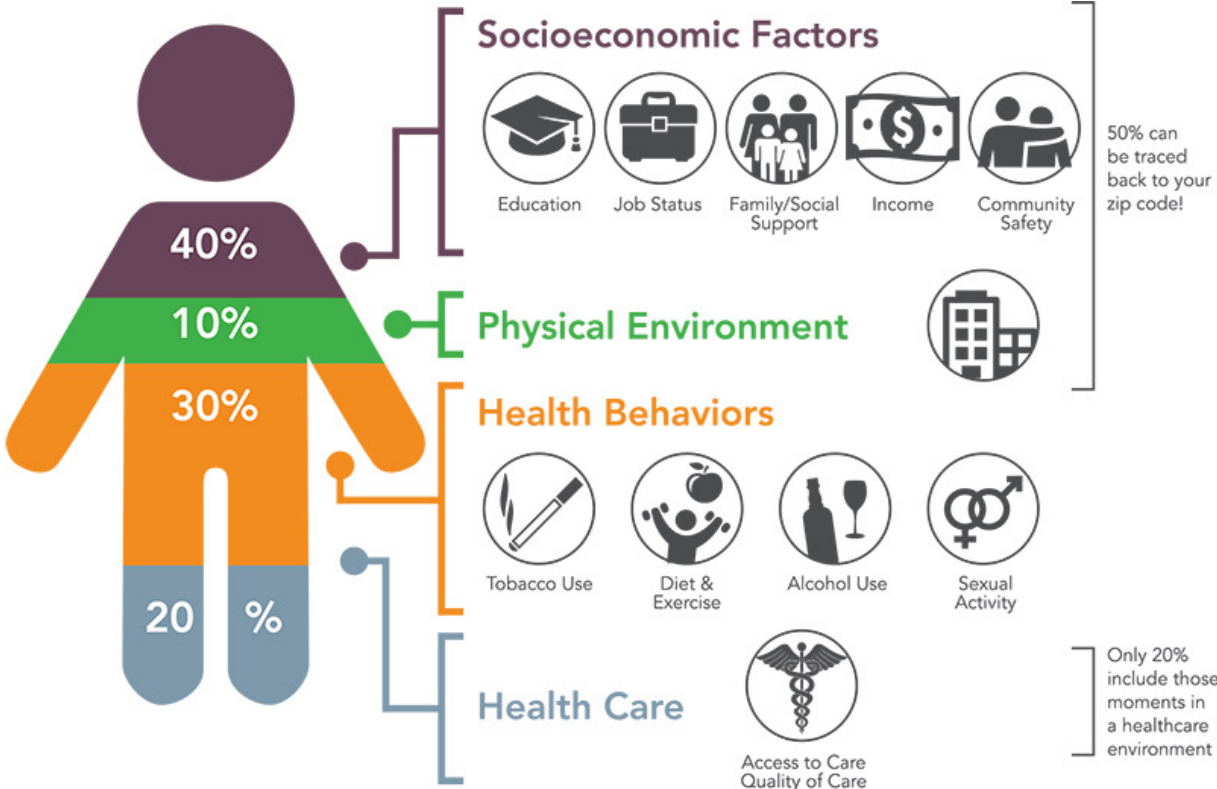
- **Identify structural and social factors driving COVID-19 health disparities among the Hispanic and Latinx community**
- **Outline recommendations for recovery in a culturally relevant context**
- **Outline recommendations to promote mental and behavioral health equity for the Hispanic and Latinx community**



# Review From Part 1

- Disproportionate impact of COVID-19 on the Hispanic and Latinx community nationally
- Snapshot of impact on Hispanic and Latinx Ohioans suggest varied impacts and concerns
- Mental and behavioral health concerns were frequently reported and central to experiences
- Despite significant impacts, we are a resilient group!

# Causes of Health Disparities



Source: Institute for Clinical Systems Improvement, Going Beyond Clinical Walls: Solving Complex Problems (October 2014)

# Structure & Agency

- Structural conditions influence life chances
- Chance is social determined
- Life chances (Structure) + Life choices (Agency)

# Healthy People 2030

- “Create social, physical, and economic environments that promote attaining the full potential for health and well-being for all.”
- In line with this goal, Healthy People 2030 features many objectives related to SDOH. These objectives highlight the importance of "upstream" factors — usually unrelated to health care delivery — in improving health and reducing health disparities

# Social Determinants of Health

- “Social determinants of health are conditions in the environments in which people are born, live, learn, work, play, worship, and age that affect a wide range of health, functioning, and quality-of-life outcomes and risks. Conditions (e.g., social, economic, and physical) in these various environments and settings (e.g., school, church, workplace, and neighborhood) have been referred to as “place.” In addition to the more material attributes of “place,” the patterns of social engagement and sense of security and well-being are also affected by where people live. Resources that enhance quality of life can have a significant influence on population health outcomes.”

# Social Determinants of Health



# Social Determinants of Health

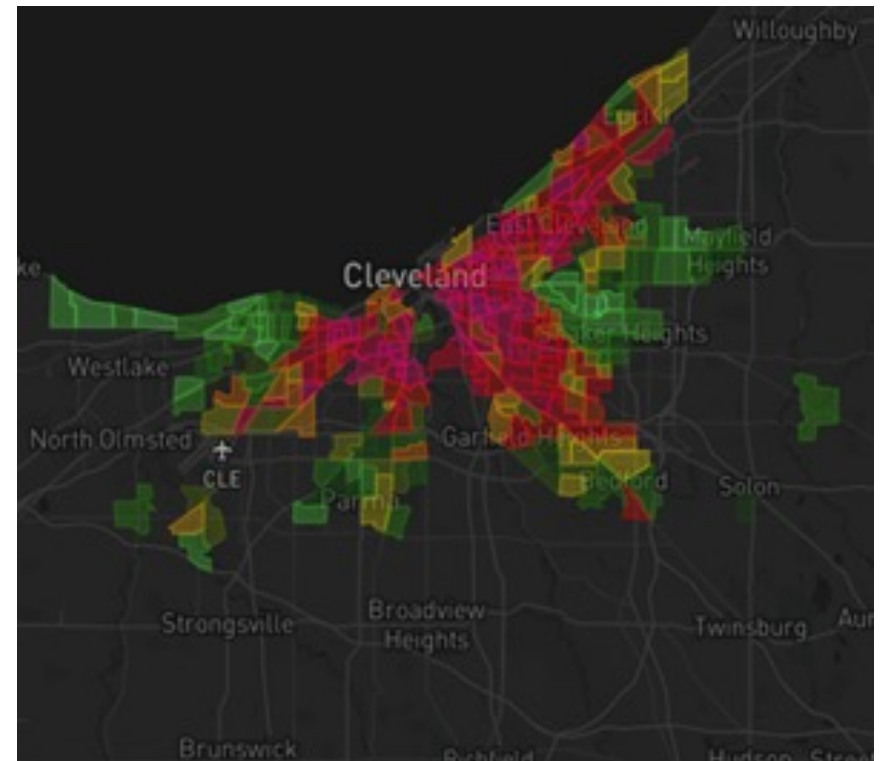
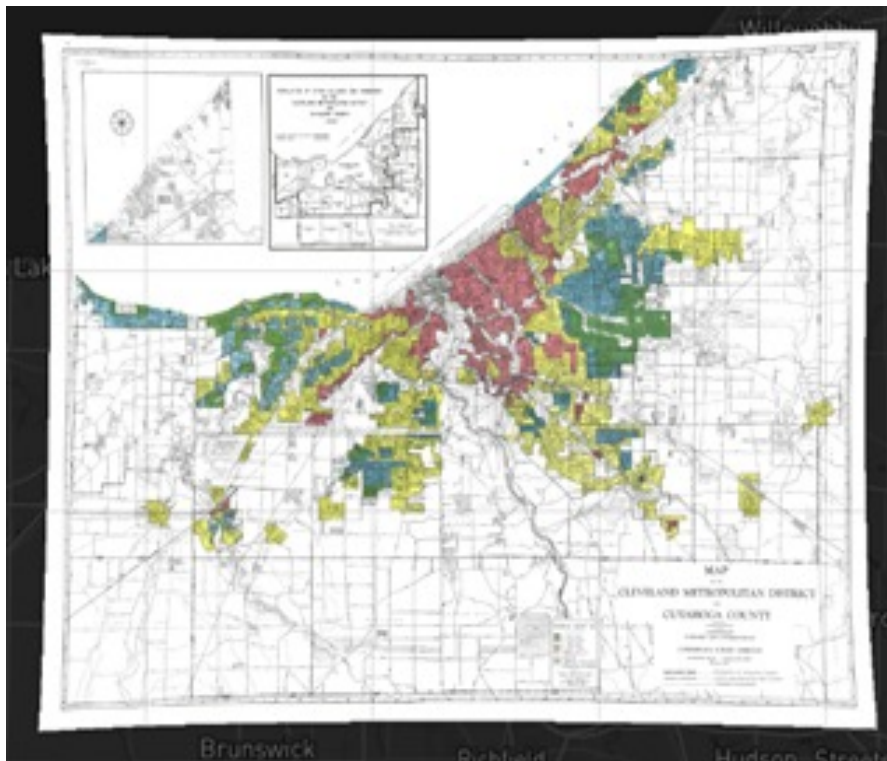


# Structural Analysis & Economic Stability

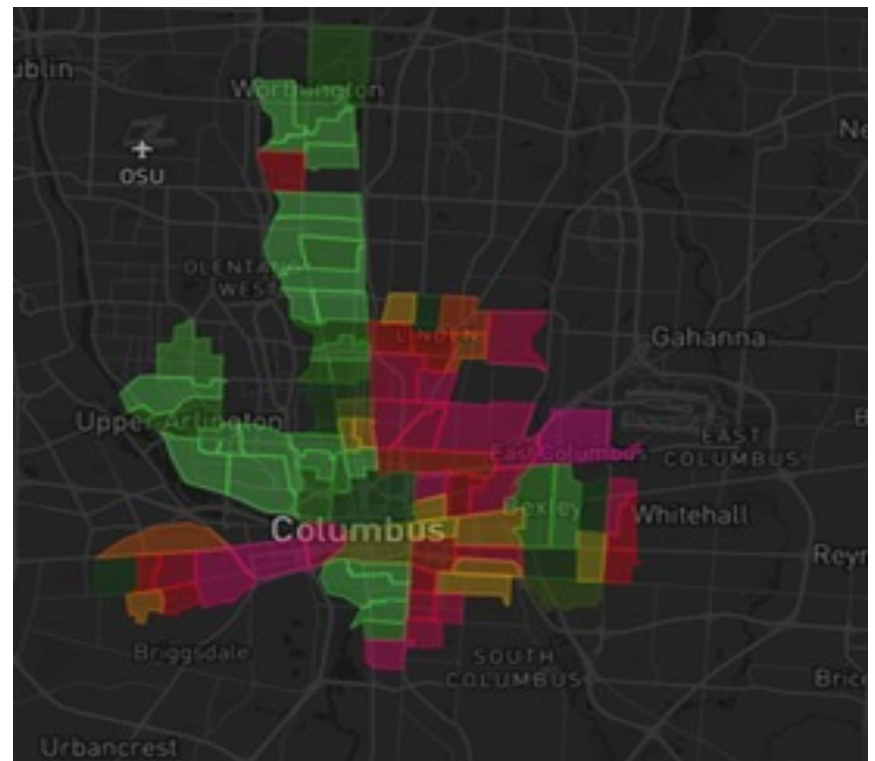
- Redlining was the practice of mapping areas, primarily where Black populations resided, in red ink as a warning to mortgage lenders
- Historically, redlining was used to deny minority customers loans and housing opportunities



# Structural Analysis & Economic Stability



# Structural Analysis & Economic Stability



# Structural Analysis & Economic Stability

Economic Policy • Analysis

Redlining was banned 50 years ago. It's still hurting minorities today.

---

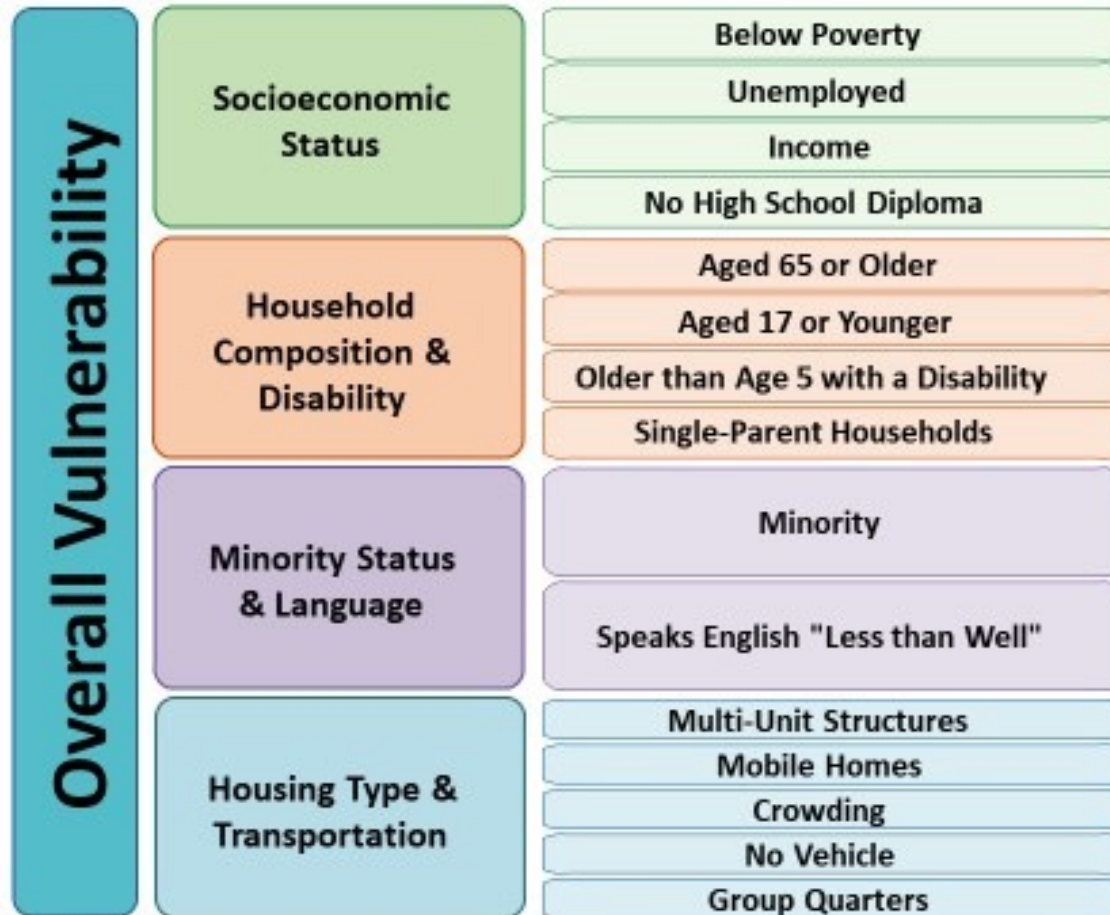
May 31, 2019

**Redlining Is Illegal, But It's Still Hurting Latino Families**

# Social Vulnerability

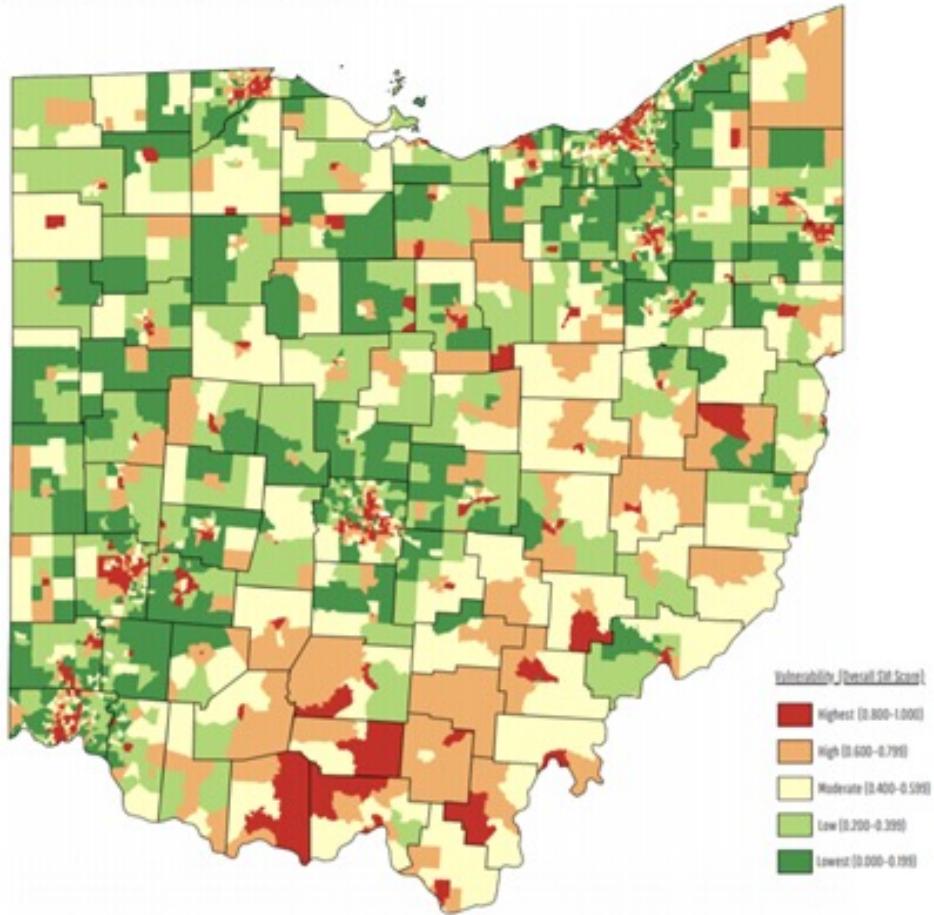
- Social vulnerability refers to potential harm to people. It involves a combination of factors that determine the degree to which someone's life and livelihood are put at risk during public health emergencies
- Social vulnerability refers to the resilience of communities when confronted by external stresses on human health, stresses such as natural or human-caused disasters, or disease outbreaks

# Social Vulnerability Index



Infographic from  
Delaware.gov

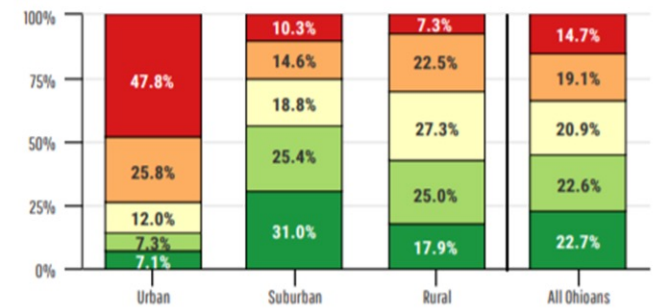
## Social Vulnerability by Census Tract



Source: 2008 Social Vulnerability Index (SVI) Centers for Disease Control and Prevention

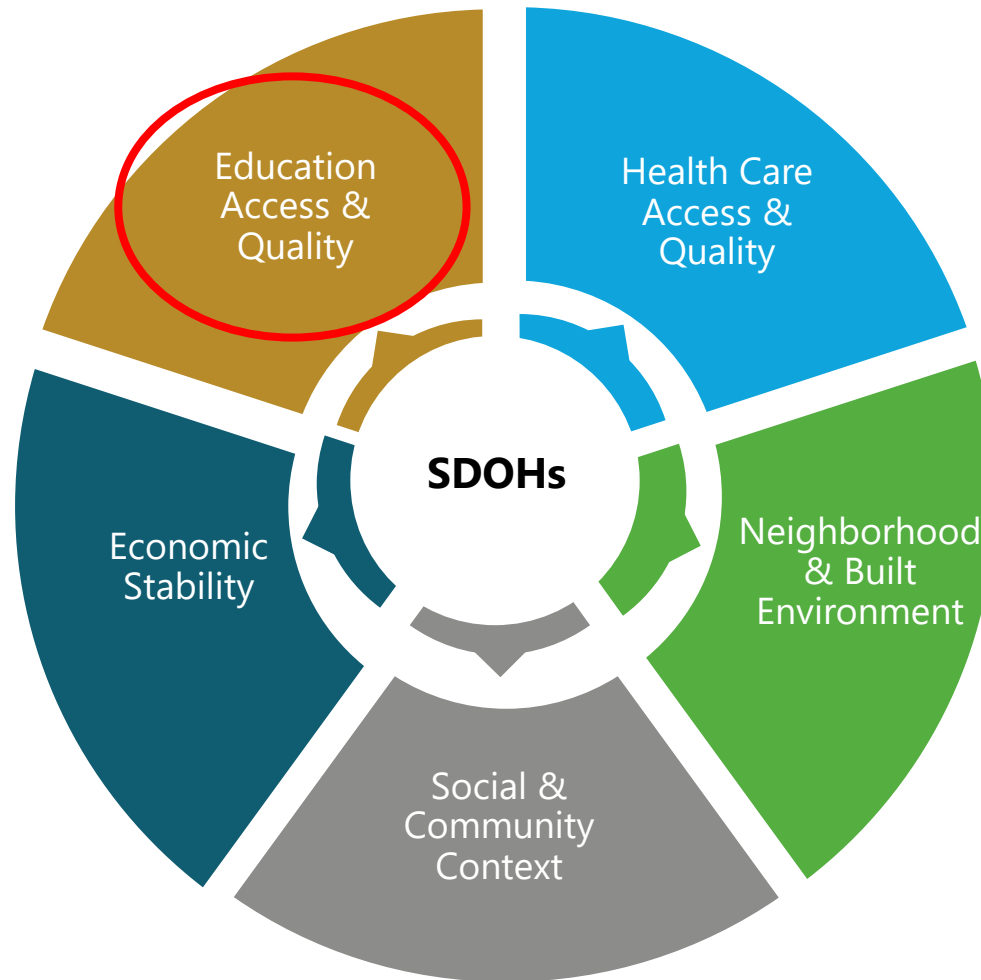
Questions? Contact Katie Fallon at [kfallon@ohioshome.org](mailto:kfallon@ohioshome.org)

## Population by Social Vulnerability & Typology





# Social Determinants of Health



# Structural Analysis & Education Access



## Educational Inequality

- Larger school size
- Larger class size
- Lower-quality curriculum
- Less qualified teachers



# Structural Analysis & Education Access

School to Prison Pipeline is REAL!



Graphic courtesy of Rethinking  
Schools  
([www.rethinkingschools.org](http://www.rethinkingschools.org))

# Structural Analysis & Education Access



- Harsh school discipline
- Zero tolerance policies
- Increased police presence
- Racial disparities in discipline
- Disproportionate impact on marginalized youth

# Structural Analysis & Education Access

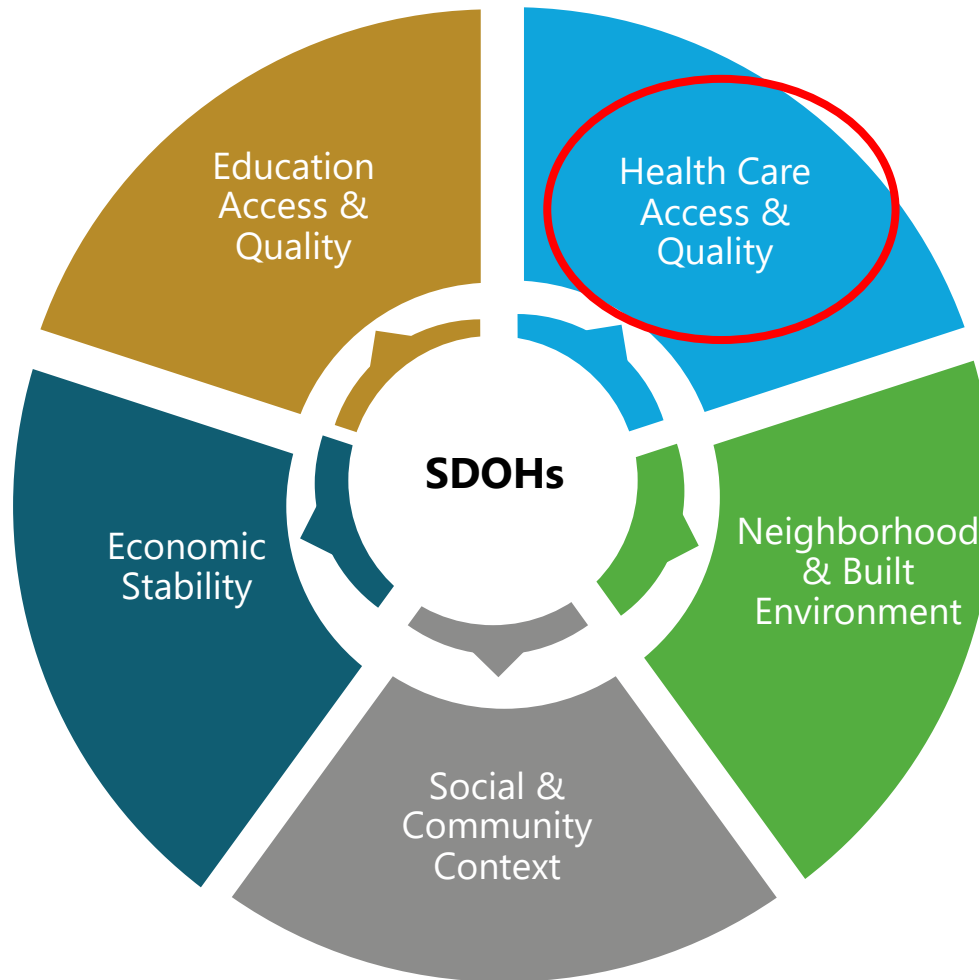
**Schools are sending kids to virtual classes as punishment. Advocates say that could violate their rights.**

“This is the new face of denial of access to public education,” one advocate said. “Now it’s just easier and covered under the guise of Covid protection.”

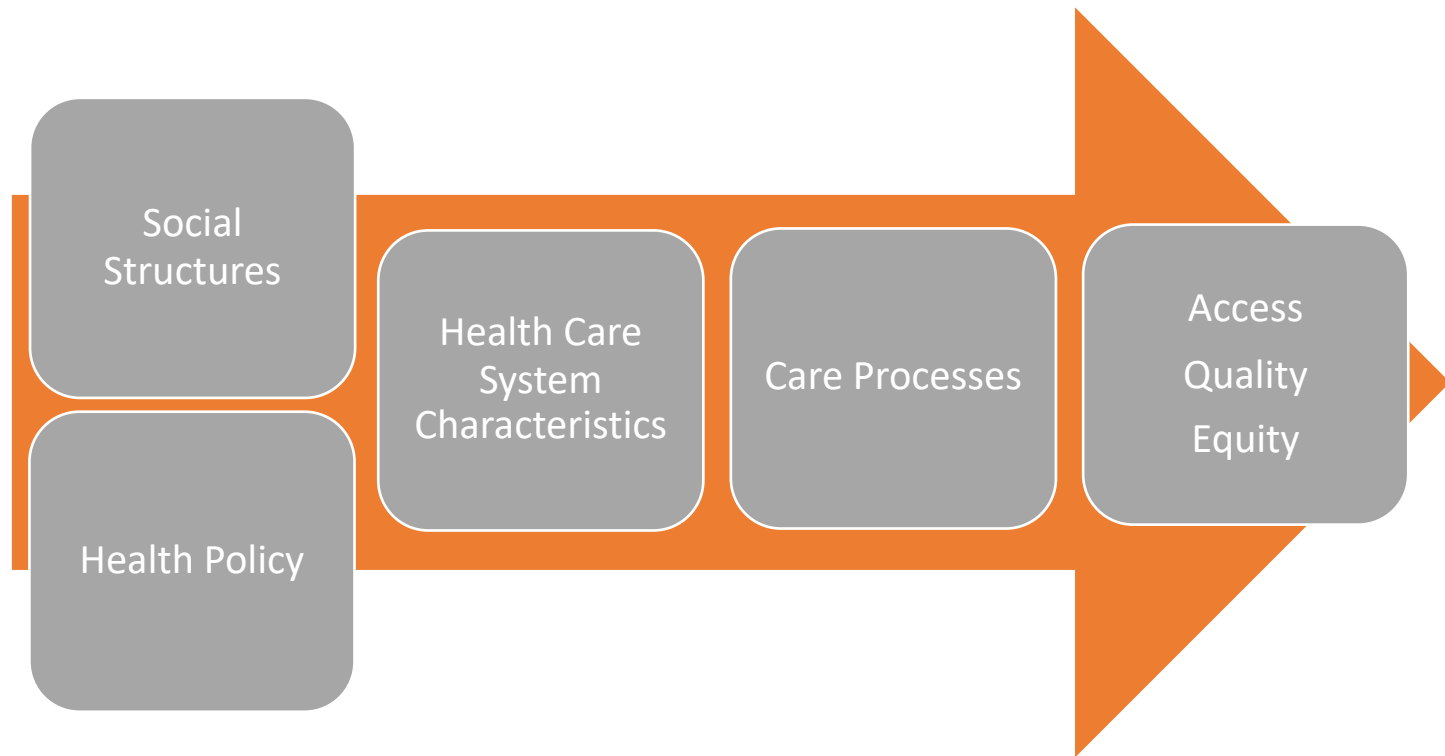
**When Covid-19 closed schools, Black, Hispanic and poor kids took biggest hit in math, reading**

An analysis of 4.4 million student test scores showed most children fell short in math – and the most vulnerable students likely fell further behind.

# Social Determinants of Health



# Structural Analysis & Health Care



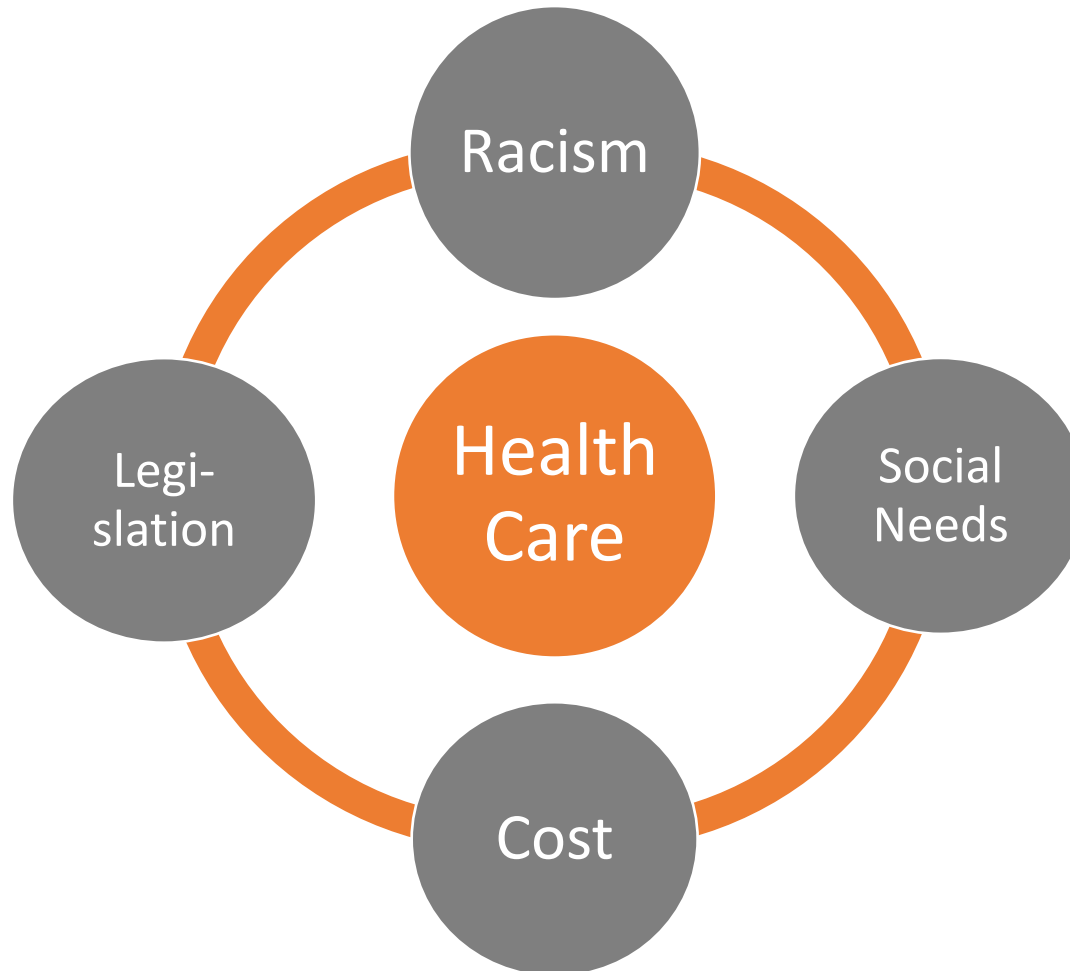
# Structural Analysis & Health Care

- Racism, discrimination and xenophobia
- Socio-political landscape and discourse
- Structural barriers to services
- Language accessibility
- Cultural and linguistic competence of services

# Structural Analysis & Health Care

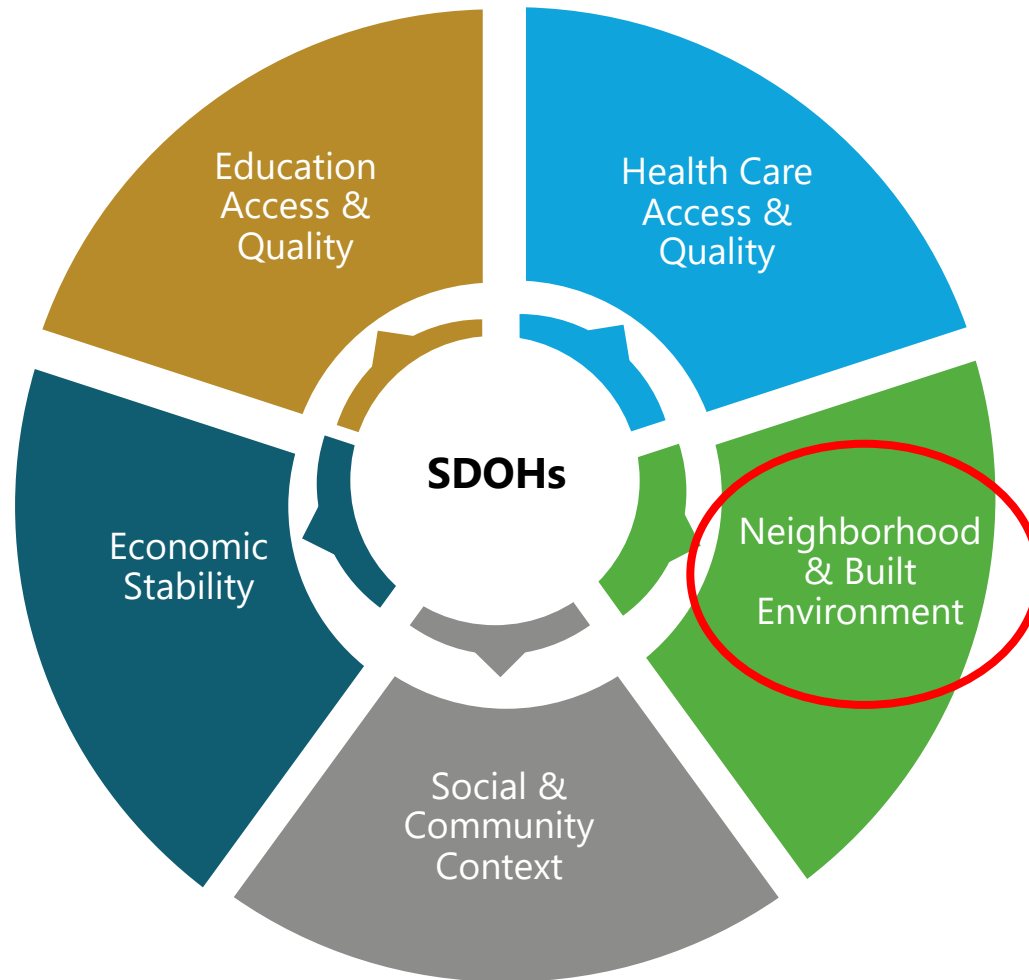
- Legacy of Anti-Immigrant Sentiment & Public Charge Rule
  - Avoidance of public benefit programs
    - **Healthcare access** (delaying care, decrease in Medicaid and CHIP enrollment or withdrawal)
    - Housing instability
    - Economic insecurity

# Structural Analysis & Health Care





# Social Determinants of Health



CDC, 2020

# Structural Analysis & Built Environment

Lower housing quality

Substandard housing conditions

Housing density/  
Overcrowding



Exposure to environmental hazards

Isolation from essential resources

Higher concentration of poverty

# Social Determinants of Health



# Structural Analysis & Social Context



Social Capital

Civic  
Infrastructure

Economic/Social  
Mobility

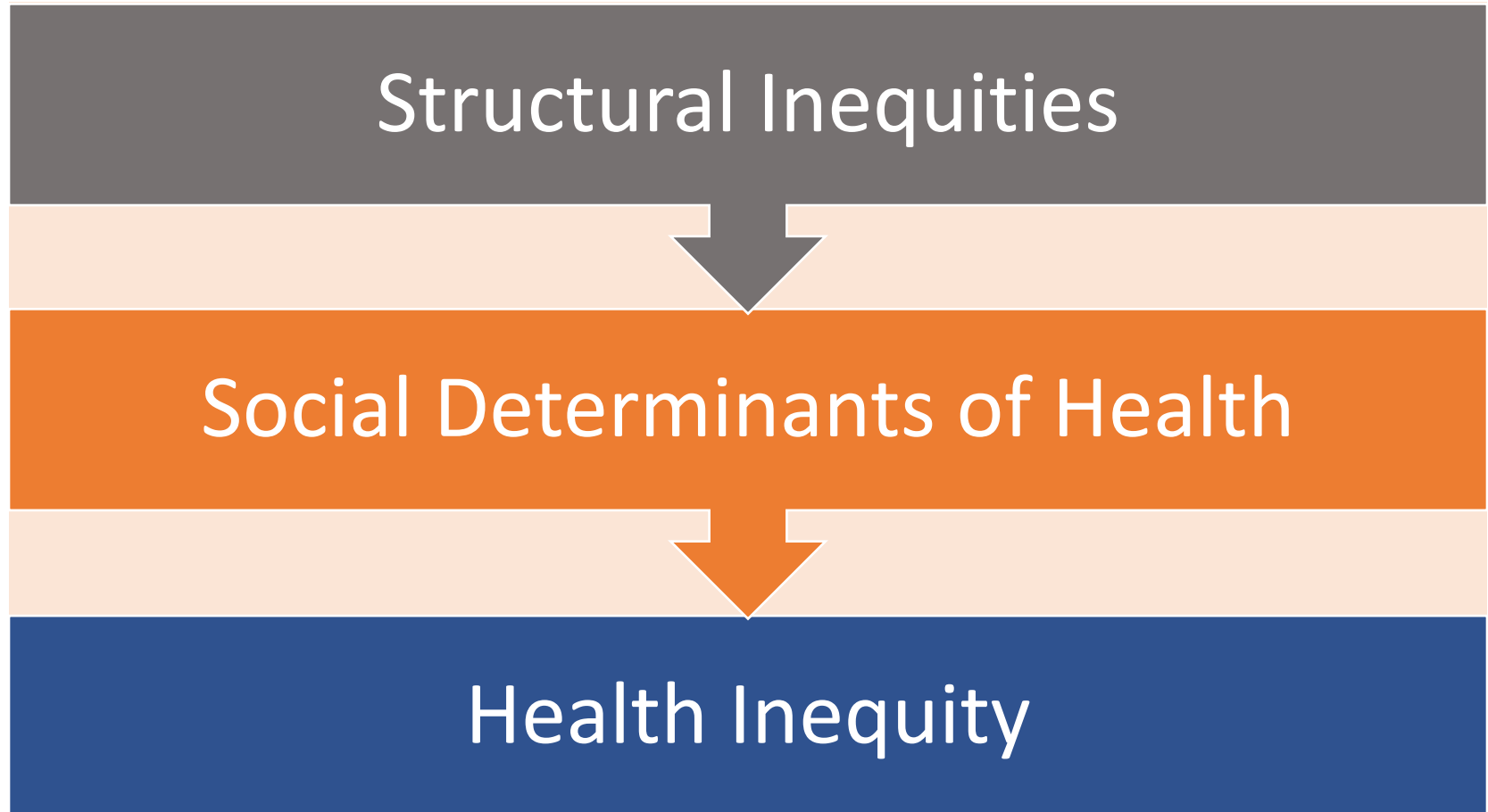
# Structural Analysis & Social Context

- Social Capital
  - Refers to the social relationships and patterns of reciprocal, enforceable trust that enable people and institutions to gain access to resources like social services, jobs, or government contracts. Social capital is a structural aspect of communities, embodying the context-specific networks that people and institutions use to achieve their goals.
  - If friends or organizational ties help someone access resources they need to achieve their goals, they represent social capital. An organization or individual may only know a few people or institutions, but these connections can help them find stable employment or improve the quality of life in their community. That individual or organization has positive social capital.

# Structural Analysis & Social Context

- Legacy of Public Charge Rule and Anti-Immigrant Sentiment
  - Avoidance of public benefit programs
    - Healthcare access
    - Housing instability
    - Economic insecurity
    - **Food insecurity**
  - **Mistrust in agencies and institutions**
    - **Reduced help-seeking**
    - **Increased isolation**

# Root Causes of Health Inequity



# Structural Competency

- “A shift in medical education ... toward attention to forces that influence health outcomes at levels above individual interactions.”
- The capacity for health professionals to recognize and respond to health and illness as the downstream effects of broad social, political, and economic structures



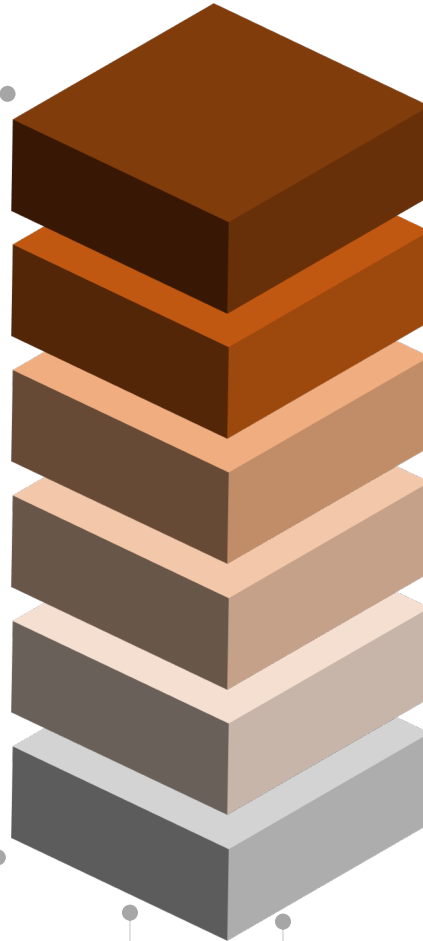
# Overview of Structural Competency

## Structural Competency

Framework for conceptualizing and addressing the role of structure in health-related social justice issues

## Structure

Aggregate of public policies, institutional practices, and social norms



## Health Disparities

Existing differences in health or health care

## Social Determinants of Health

Current cultural and social conditions

## Health Inequalities

Differences in the opportunities groups have to achieve optimal health

## Structural Vulnerability

Risk experienced as a result of structural violence

## Structural Violence

How social structures cause harm

## Social Structures

Policies, economic systems and other institutions that contribute to the vulnerability of communities

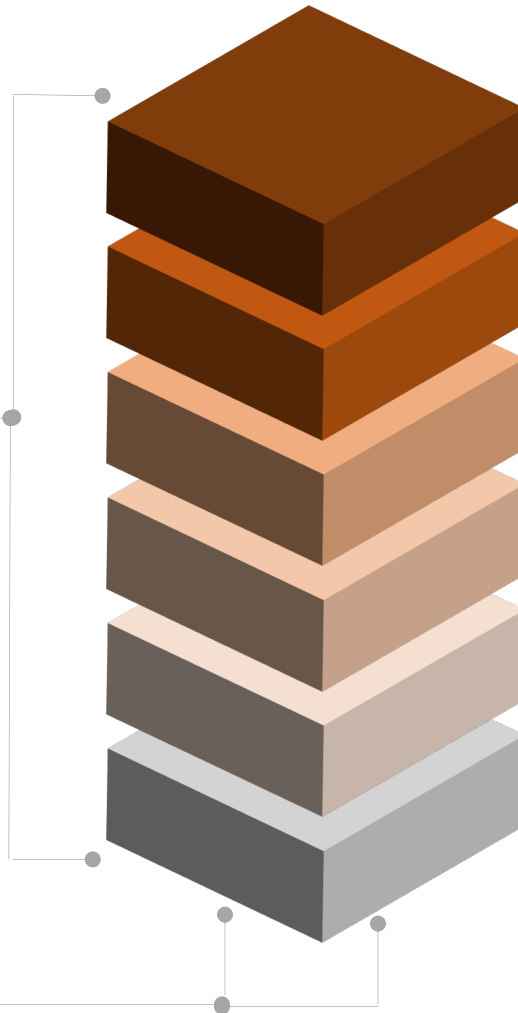
# Overview of Structural Competency

## Structural Competency

Framework for conceptualizing and addressing the role of structure in health-related social justice issues

## Structure

Aggregate of public policies, institutional practices, and social norms



## Social Structures

Policies, economic systems and other institutions that contribute to the vulnerability of communities

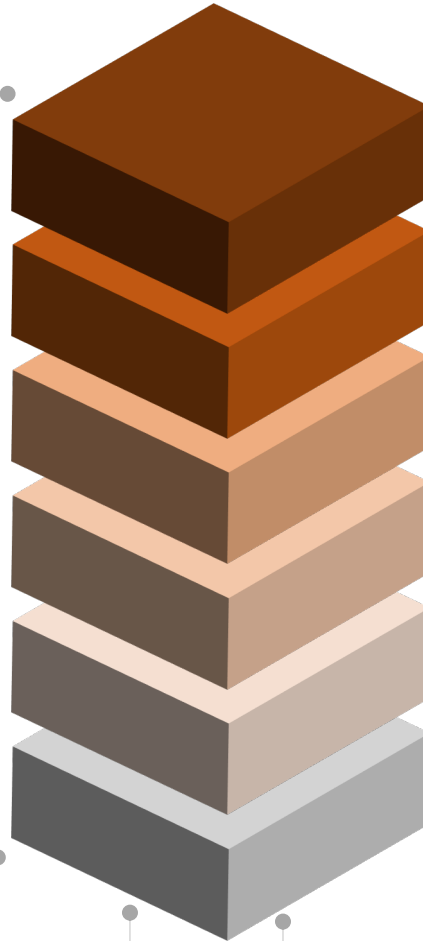
# Overview of Structural Competency

## Structural Competency

Framework for conceptualizing and addressing the role of structure in health-related social justice issues

## Structure

Aggregate of public policies, institutional practices, and social norms



## Structural Violence

How social structures cause harm

## Social Structures

Policies, economic systems and other institutions that contribute to the vulnerability of communities

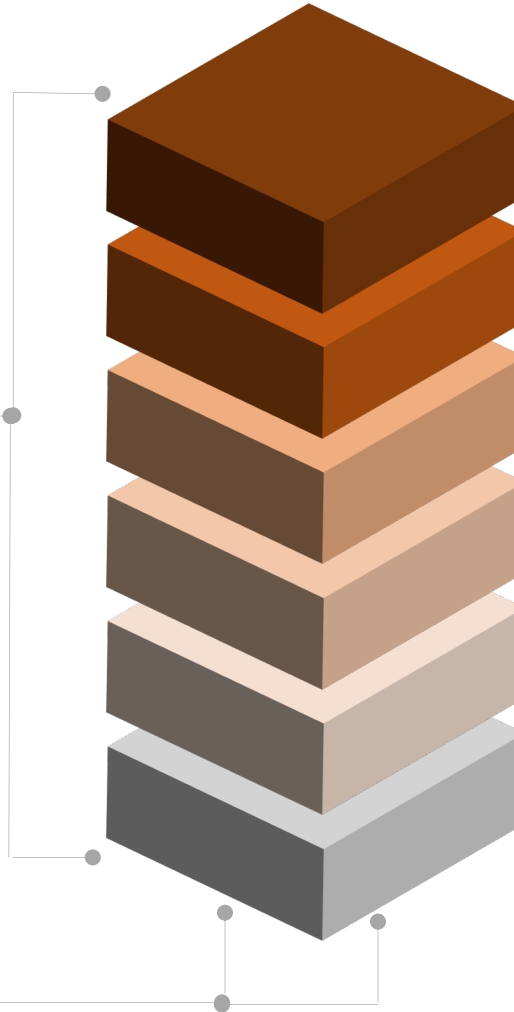
# Overview of Structural Competency

## Structural Competency

Framework for conceptualizing and addressing the role of structure in health-related social justice issues

## Structure

Aggregate of public policies, institutional practices, and social norms



## Structural Vulnerability

Risk experienced as a result of structural violence

## Structural Violence

How social structures cause harm

## Social Structures

Policies, economic systems and other institutions that contribute to the vulnerability of communities

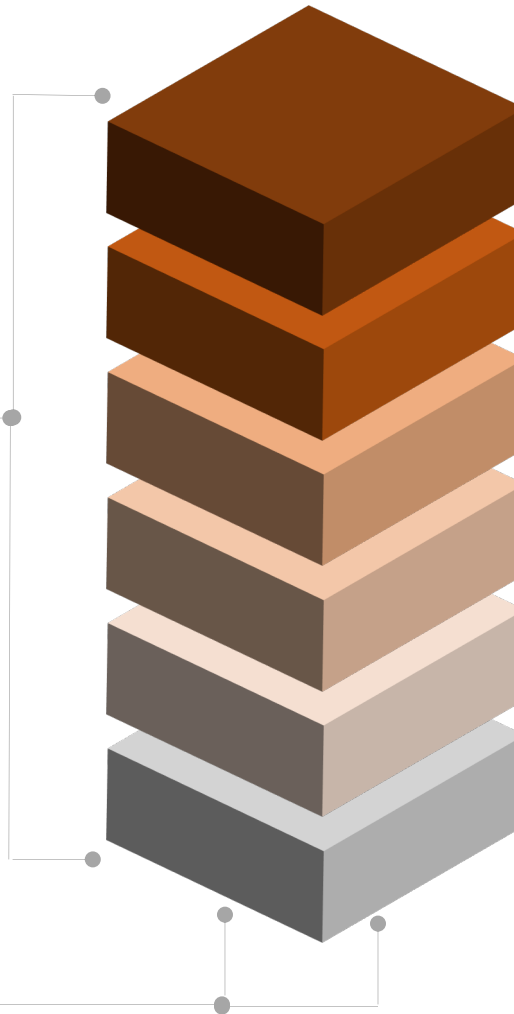
# Overview of Structural Competency

## Structural Competency

Framework for conceptualizing and addressing the role of structure in health-related social justice issues

## Structure

Aggregate of public policies, institutional practices, and social norms



## Health Inequalities

Differences in the opportunities groups have to achieve optimal health

## Structural Vulnerability

Risk experienced as a result of structural violence

## Structural Violence

How social structures cause harm

## Social Structures

Policies, economic systems and other institutions that contribute to the vulnerability of communities

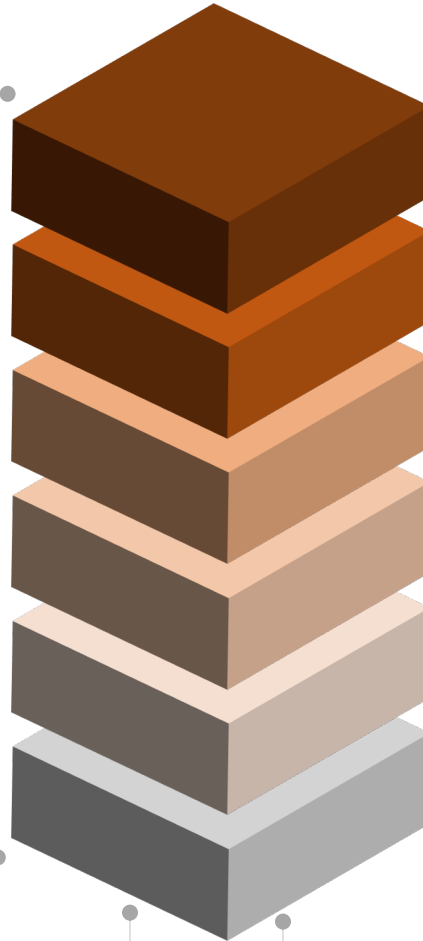
# Overview of Structural Competency

## Structural Competency

Framework for conceptualizing and addressing the role of structure in health-related social justice issues

## Structure

Aggregate of public policies, institutional practices, and social norms



## Social Determinants of Health

Current cultural and social conditions

## Health Inequalities

Differences in the opportunities groups have to achieve optimal health

## Structural Vulnerability

Risk experienced as a result of structural violence

## Structural Violence

How social structures cause harm

## Social Structures

Policies, economic systems and other institutions that contribute to the vulnerability of communities

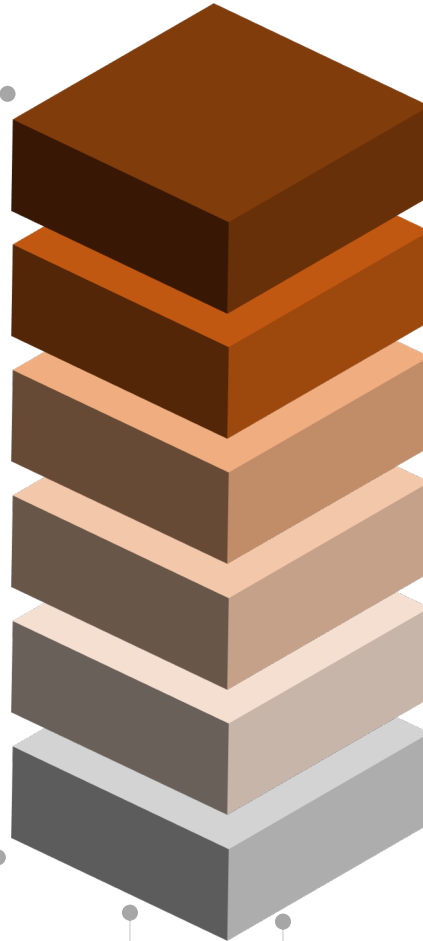
# Overview of Structural Competency

## Structural Competency

Framework for conceptualizing and addressing the role of structure in health-related social justice issues

## Structure

Aggregate of public policies, institutional practices, and social norms



## Health Disparities

Existing differences in health or health care

## Social Determinants of Health

Current cultural and social conditions

## Health Inequalities

Differences in the opportunities groups have to achieve optimal health

## Structural Vulnerability

Risk experienced as a result of structural violence

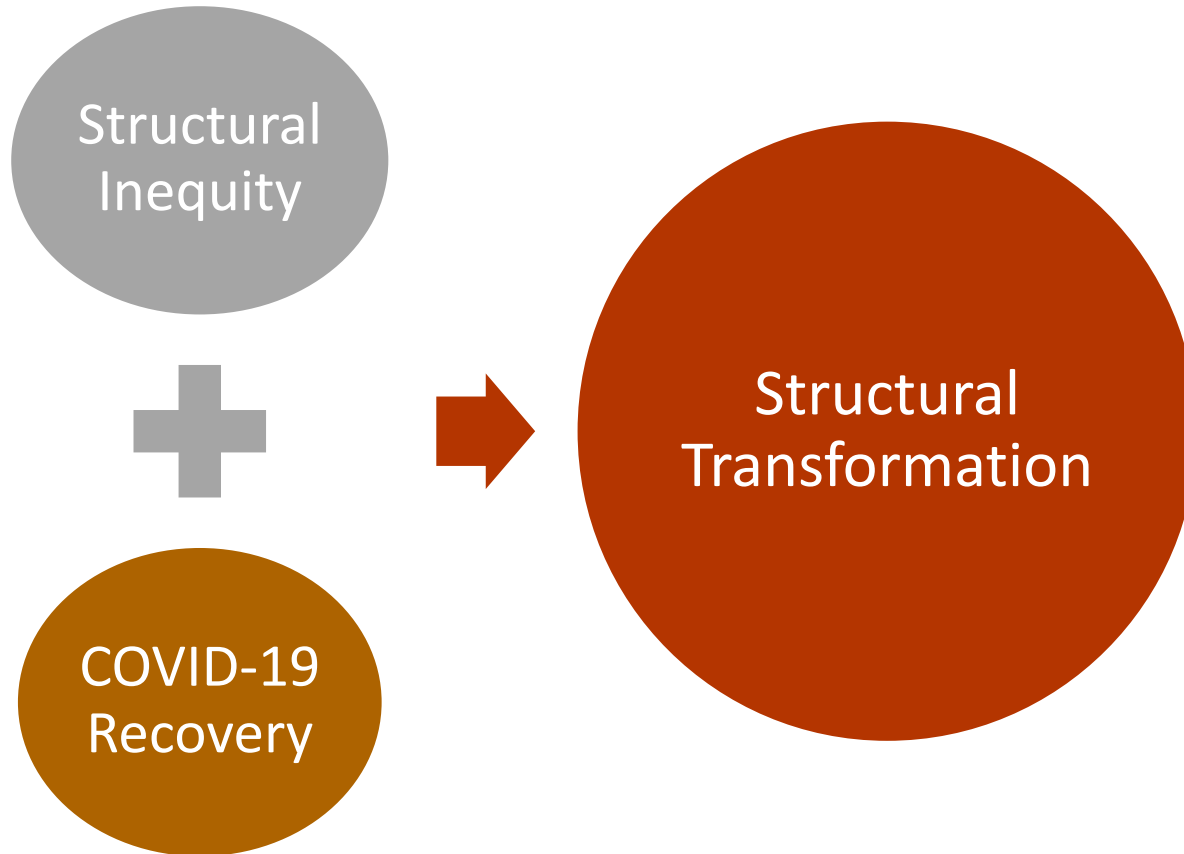
## Structural Violence

How social structures cause harm

## Social Structures

Policies, economic systems and other institutions that contribute to the vulnerability of communities

# Structural Transformation





# COVID-19?



# Structural Transformation for Equity

- A more robust public health and state level response is needed to address structural and systemic factors that make marginalized populations uniquely vulnerable
- A review of current strategies for how larger state organizations and systems interface with marginalized communities



# Structural Transformation for Equity

- A stakeholder involvement plan for continuous and permanent involvement of public, key community stakeholders, and members of marginalized communities in collaborating and shared decision-making

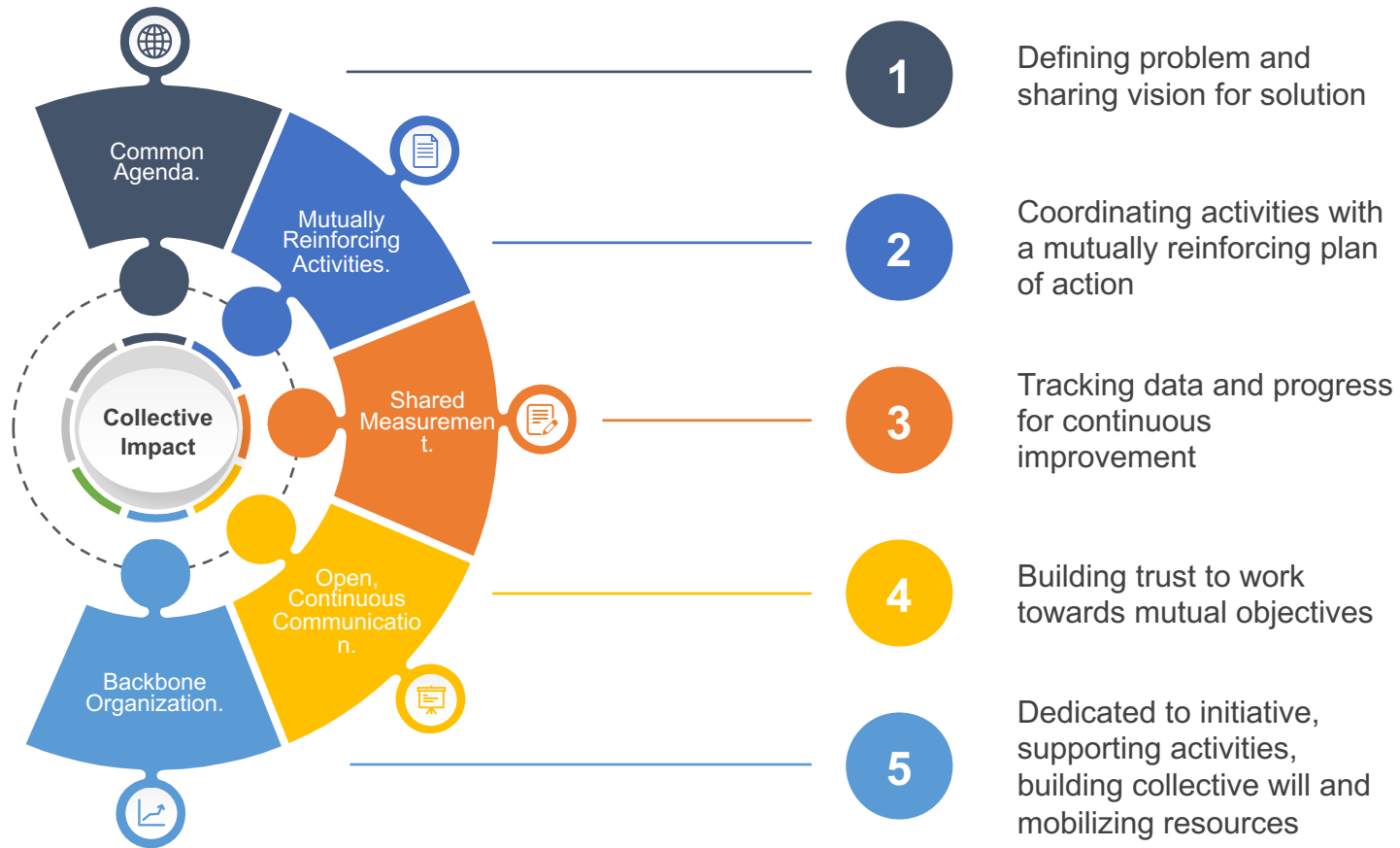


# Structural Transformation for Equity

- Emphasis on structural analysis and addressing structural inequality as a root cause of disparities
- Cross-sector collaborations and interventions to address structure, and investing in ongoing training on combatting structural inequalities, including equity, social justice, and antiracism training



# Collective Impact



# Community Partnerships

- Community engagement and outreach
  - Partner with existing CBOs or MCBOs
  - Support existing organizations & resources



# Community Partnerships

- Culturally-based capacity building
  - Environmental scan and needs assessment
  - Culturally-informed and responsive services and supports





# Public Health Preparedness

- Commission an in-depth study or examination of experience of Hispanics and Latinxs in Ohio to inform future planning for public health emergencies
- Formation of a community advisory board to help inform concerns among Hispanic and Latinx Ohioans
- Ensuring language access throughout systems





# Safety Recommendations

- Ending detention and/or deportation proceedings without adequate ability to maintain safety in this environment
- Adequate protections should be provided for all essential workers with resources for businesses to support provisions
- Adequate protections for the safety of undocumented and detained immigrants who are particularly vulnerable



# Health Information & Health Communication

- Public health emergency = emergency across sectors and systems
- Implement strategies to accelerate communication from public health authorities
- Improve integration of communication networks with the community and healthcare system



# Safety Net Programs & Resources

- Advocacy for ongoing policy changes
- Support and resources for community-based organizations and other support services to help connect households and families to available resources
- Development of information clearinghouse



# Digital Divide

- Investment in cross-sector collaborative efforts to identify, support, and deliver immediate education technology tools and needs
- Plan for identifying the necessary technology, infrastructure and capabilities to address inequities in broadband access



# School Disruption

- Providing varied options for maintaining contact or communication with teachers and school support staff
- Providing clear communication and accessible information regarding instructional plans
- Matching learning resources to learning needs in context



# Mental & Behavioral Health

- Invest in building additional frontline capacity
- Expand network of non-traditional MH providers
- Increase identification and utilization of cultural brokers across various settings



# Mental & Behavioral Health

- Ensuring sufficient insurance coverage and adequate reimbursement for behavioral health services
- Ensuring ongoing and sufficient insurance coverage for behavioral health services delivered by telephone (audio only) and telehealth (audio and visual)
- Ensuring sufficient insurance coverage and reimbursement for language access and interpretation services



# Mental & Behavioral Health

- Advocacy for adoption of trauma-informed care to promote resilience and prevent re-traumatization across organizations and systems of care
- Emphasis on cultural proficiency and cultural factors as strengths in trauma-informed care
- Increasing support and resources for organizations to effectively adopt and sustain utilization of the trauma-informed care framework





# Mental & Behavioral Health

- Utilization of strength-based and empowerment approaches, and leveraging of cultural strengths and values, in developing programming or services intended to mitigate negative impacts and promote positive growth
- Leveraging family and community-oriented approaches for collective responsibility and community impact



# Report Available

<https://ochla.ohio.gov/wps/portal/gov/ochla/research/community-reports-demographics/02-the-impact-of-covid-19>

## The Impact of COVID-19 on Ohio's Hispanic/Latinx Communities



# Presenter's Contact Information

Contact: Marilyn Laila Sampilo, PhD, MPH

Email: [SampilM@ccf.org](mailto:SampilM@ccf.org)



DrMLSampilo



Marilyn Sampilo



National Hispanic and Latino

MHTTC

Mental Health Technology Transfer Center Network

Funded by Substance Abuse and Mental Health Services Administration

Ibis Carrión, Psy.D.  
Director

[ibis.carrion@uccaribe.edu](mailto:ibis.carrion@uccaribe.edu)

Angel Casillas, MHS  
Project Manager

[angel.casillas@uccaribe.edu](mailto:angel.casillas@uccaribe.edu)

Your opinion is important to us!  
Fill out your evaluation forms,  
it only takes a couple of  
minutes! Just scan this code with  
your smartphone. Don't worry if  
you can't - an email will be sent  
to you with the link.



### Follow Us



@hilaMHTTC



**Evaluation:** <https://www.surveymonkey.com/r/GY6Q93Y>

**Website:** <http://www.mhttcnetwork.org/hispaniclatino/>

**Email:** [hispaniclatino@mhttcnetwork.org](mailto:hispaniclatino@mhttcnetwork.org)

**SAMHSA**  
Substance Abuse and Mental Health  
Services Administration

**UCC**  
UNIVERSIDAD CENTRAL DEL CARIBE

**IRESA**  
INSTITUTE OF RESEARCH,  
EDUCATION  
AND SERVICES IN ADDICTION

# References

- Amin et al. (2021). How Does Cost Affect Care. Retrieved from <https://www.healthsystemtracker.org/chart-collection/cost-affect-access-care/#item-start>
- Bernstein et al., (2020). Amid Confusion over the Public Charge Rule, Immigrant Families Continued Avoiding Public Benefits in 2019. Urban Institute. Retrieved from
- Center for Disease Control (2020). Social determinants of health. Retrieved from <https://www.healthypeople.gov/2020/topics-objectives/topic/social-determinants-of-health>
- Darling-Hammond, L. (1998). Unequal Opportunity: Race and Education. Retrieved from <https://www.brookings.edu/articles/unequal-opportunity-race-and-education/>
- Matthew et al., (2016). Time For Justice: Tackling Race Inequalities in Health and Housing. Retrieved from <https://www.brookings.edu/research/time-for-justice-tackling-race-inequalities-in-health-and-housing/>
- Metzl, J. M., & Hansen, H. (2014). Structural competency: theorizing a new medical engagement with stigma and inequality. *Social science & Medicine* (1982), 103, 126–133. <https://doi.org/10.1016/j.socscimed.2013.06.032>
- NASM (2017). Communities in action: Pathways to health equity. Retrieved from <https://www.nap.edu/read/24624/chapter/5>

# References

- National Community Reinvestment Coalition (2021). Redlining and Neighborhood Health. Retrieved from <https://ncrc.org/holc-health/>
- Office of Disease Prevention and Health Promotion, Office of the Assistant Secretary for Health, Office of the Secretary, U.S. Department of Health and Human Services. (2021). Health People 2030: Building a Healthier Future For All. Retrieved from <https://health.gov/healthypeople/objectives-and-data/social-determinants-health>
- Ohio Housing Finance Agency, (2020). Where Ohioans are Most Vulnerable to Disaster or Outbreak. Retrieved from <https://ohiohome.org/news/documents/SocialVulnerability.pdf>
- Polaski, A., & Nichols, J. M. (2021). North Carolina Lawmakers Propose Attacks on LGBT Community's Access to Medical Care. Retrieved from [https://equalitync.org/news/north\\_carolina\\_lawmakers\\_propose\\_attacks\\_on\\_lgbtq\\_communities\\_access\\_to\\_medical\\_care/](https://equalitync.org/news/north_carolina_lawmakers_propose_attacks_on_lgbtq_communities_access_to_medical_care/)
- Reynolds, D. (2021). Why Arkansas Anti-Trans Law is So Dangerous for LGBTQIA+ Youth, Retrieved from <https://www.healthline.com/health-news/why-arkansas-anti-trans-law-is-so-dangerous-for-lgbtqia-youth>

# References

- Ronan, W. (2021). 2021 Slated to Become Worst Year for LGBTQ State Legislative Attacks as Unprecedented Number of States Poised to Enact Record-Shattering Number of Anti-LGBTQ Measures Into Law. Retrieved from <https://www.hrc.org/press-releases/2021-slated-to-become-worst-year-for-lgbtq-state-legislative-attacks>
- State of Delaware, (2021). Social Vulnerability Index. Retrieved from <https://myhealthycommunity.dhss.delaware.gov/locations/zip-code-19711/climate-change/svi>
- Structural Competency Workgroup (2016). Retrieved from <https://structuralcompetency.org/training-materials/structural-competency-networks/>
- The Advancement Project (2013). The School to Prison Pipeline: Brochure. Retrieved from <https://advancementproject.org/resources/school-prison-pipeline-brochure/>
- The Annie E. Casey Foundation, (2004). Social Capital in Community Development. Retrieved from <https://www.aecf.org/m/resourcedoc/aecf-TheRoleofSocialCapitalBuildingCommunities-2004.pdf#page=11>